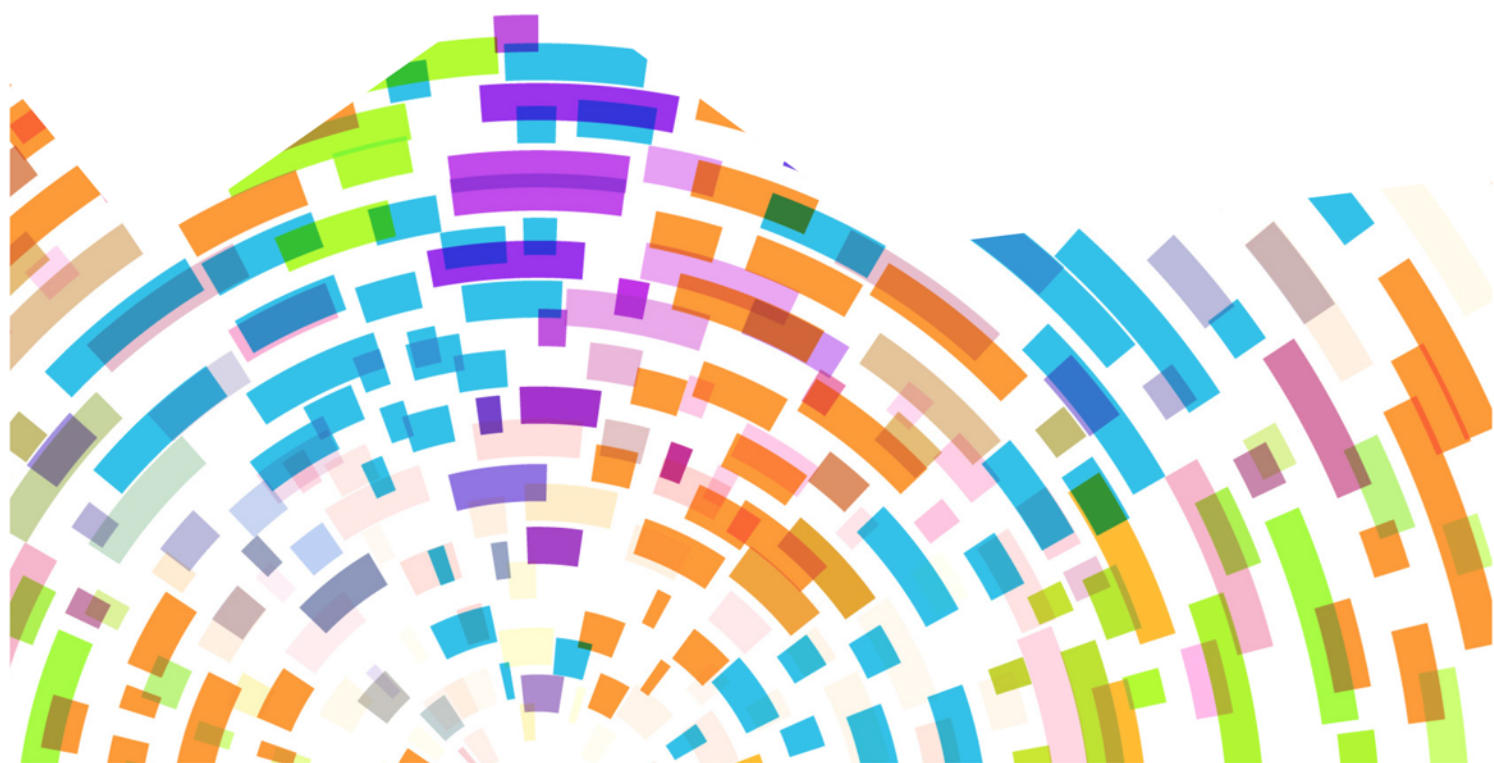


Moranbah State High School



Investing for Success – 2018 Report

March 2019



Queensland
Government

Background

Moranbah State High School's 2018 Investing for Success contribution was utilised for the following purposes:

1. **Improve school wide reading practices**

Increase the percentage of student achieving in the U2B in NAPLAN to 20% Year 7 & 9 students for Reading (Baseline 2017: Year 7: 17.5% Reading; Year 9; 15.9% in Reading)

Increase students achieving at the National Minimum Standards in Reading to 100% Year 7 and 9 (2017 Baseline data: Year 7 – 96.5% in Reading; Year 9 - 94% in Reading)

2. **Build rigorous practices in the implementation and delivery of the Australian Curriculum**

Increase the percentage of students B or better in English, Maths and Science (7-9) by 5%. Target 75% (baseline 2017 - Year 7: Maths 70%, English 56%, Science 47%; Year 8: Maths 69%, English 60%, Science 46%; Year 9 Maths 44%, English 36%, Science 36%)

Enhance teacher and leader capability through the employment of a Pedagogy Coach and consultant Dr. Peter Stebbins – High Performing Teams – building mentoring and coaching capability.

3. **Maintain QCE completion for exiting Year 12 students at 100% and enhanced pathway options for Senior students to improve retention** (through purchase of data tracking software and Teacher Aide to support Hospitality, Agricultural and Aquatic Practices)

4. **Improve school behaviour management policy and implementation through the employment of a LRT to enable effective teacher release for profiling, mentoring and coaching improving student and parent opinion** - 85% parents and students believe this is a good school

(Baseline 2017: Parents 79%; students 68.8%)

5. **Improve student attendance rates to ensure 80% of students achieving the school target of 92% attendance** (through the employment of a full time A02 Attendance Officer to assist in the case management at risk students)

Impact – Student improvement

The table attached demonstrates our 2018 performance.

Scalability – Potential to implement

The majority of the funding was utilised to support teachers in the work they do (particularly in regards to tracking and monitoring). We utilised money in the VET sector to ensure that we would continue to maintain our RTO status. Our Senior outcomes continue to be high.

The employment of a Youth Support Coordinator certainly assisted in the case management of “at risk” students in the Senior school (contributing to the 100% QCE attainment).

Moranbah State High School – Performance Measures – I4S Review

		2019 Target	2016	2017	2018
C ompletions & Transition	% Year 12 QCE or QCIA	100%	100%	100% (94 QCE; 2 QCIA)	100% (87 QCE; 4 QCIA)
	% Year 9 JCE	100%			
	Year 12 Cert II Completions	100%	98.4%	98% (94 students)	96% (87 Students who received a QCE)
	Year 12 Cert III Completion	30%	28.6%	27% (26 students)	TBC
	Year 12 OP (1-15)	80%	76.5%	70.3%	46%
	SAT Completions			31	TBC
	%QTAC Offer	98%	94.1%	96.7%	TBC
	Destination Data - % of students in education, training and employment six months after year 12	100%	87%	92.9%	TBC
L iteracy & Numeracy	Reading	NAPLAN NMS & U2B			
	Year 7	NMS – 100% U2B - 30%	98% / 26.5%	96.5% / 17.5%	94.7% / 14%
	Year 9	NMS – 100% U2B - 20%	93.8% / 6.3%	94.3% / 15.9%	93% / 9%
	Writing	NAPLAN U2B			
	Year 7	NMS – 100% U2B - 30%	88.2% / 4.9%	89.6% / 9.6%	84.6% / 9.4%
	Year 9	NMS – 100% U2B - 20%	70.8% / 1.5%	83% / 9.1%	62.4% / 3.0%
	Numeracy	NAPLAN U2B			
	Year 7	NMS – 100% U2B - 30%	98% / 22%	97.3% / 22.5%	98.3% / 10.4%
	Year 9	NMS – 100% U2B - 20%	98.4% / 6.3%	98.9% / 12.5%	97% / 15.2%
A cademic	Students at C or better	90%	Sem 1 – 91.7% Sem 2 – 93%	Sem 1 – 89.5% Sem 2 – 89.8%	Sem 1 – 86.9% Sem 2 – 88.9%
S tudent Wellbeing	Attendance	92%	90.3% (Nov, 16)	89.9% (Nov, 17)	88.5% (Nov, 18)
S ustainability	Improved School Opinion Survey	95% of parents, students and teachers believe this is a good school.	Parents: 79% Students: 68% Teachers: 87.5%	Parents: 89.6% Students: 92.9% Teachers: 86.3% 98.1% of teachers enjoy working at this school	Parents: 79.2% Students: 86.7% Teachers: 96.3% 93% of teachers enjoy working at this school
	Staff Capability	100% of staff with completed and actioned ADPP 90% of teachers feel that they have access to quality professional development aligned to their Developing Performance plan (SOS)	Baseline School Opinion Survey data in 2016 - 70.8%.	Baseline School Opinion Survey data in 2017 – 88.5%.	Baseline School Opinion Survey data in 2017 – 86.6%

Investment – Creating value

Overview of Expenditure:

Item	Actual	Budgeted
Pedagogy Coach	\$57,389.51	\$60,000
Attendance Officer	\$13,988	\$50,000
High Performing Teams Coach (Peter Stebbins)	\$37,423	\$38,000
Senior School Data Tracking Admin Officer	\$40,035	\$15,000
Learning Support Teacher for QCE support	\$10,873.67	\$16,000
Teacher Aides for Hospitality and Agricultural Practices (QCE attainment)	\$3460	
Track Ed Software	\$3360	
TOTAL:	\$143,188	